



2.5" SSD M3A & M.2 SATA (2242) M3B



Product Specification Morex 2.5" SSD A3A



MOREX INFORMATION ENT., CO., LTD.

8 NO. 716, ZHONGZHEN RD., ZHONGHE DIST., NEW TAIPEI CITY 23552, TAIWAN (R.O.C.)

TEL: +886 2 29858063 FAX: +886 2 29845077

E-MAIL: linda@morex.com.tw WEB: www.morex.com.tw



2.5" SSD M3A & M.2 SATA (2242) M3B



Form Factor

- 2.5" SSD (SFF-8201)

NAND Flash Type

- 3D-MLC

Capacities

- 32GB, 64GB, 128GB, 256GB, 512GB

Performance

- Sequential Read (max): 547 MB/sec
- Sequential write (max): 479 MB/sec
- Random Read (max): 67300 IOPS
- Random write (max): 79000 IOPS

Supply Voltage

- 5V±5%

Power Consumption

- Idle mode: 0.6W (5Vx120mA)
- Active mode(max): 6W (5Vx1.2A)

Temperature Ranges

- Operating:
- Standard: 0°C~+70°C
 - Extended: -25°C~+85°C
 - Industrial: -40°C~+85°C
- Storage:
- -55°C to 95°C

Shock & Vibration

- Shock: 1500G@0.5ms
- Vibration: 20G (7~2KHz)

MTBF

- > 3,000,000 hours

Compliance With

- Serial ATA Revision 3.1 specifications
- SATA3 (6Gb/s) interface
- Backward compatible with SATA1 (1.5Gb/s) and SATA2 (3Gb/s) interface
- ATA/ATAPI-8 and ACS-2 command set
- Data set management command (TRIM)
- SATA Device Sleep (DEVSLP)
- Self-Monitoring, Analysis, and Reporting Technology (S.M.A.R.T)

Data Protection and Reliability

- Built-in hardware ECC, enabling up to 66-bit correction per 1KB
- Supports ATA8 security feature set
- Internal data shaping technique increases data endurance
- Global wear leveling algorithm

Certificates and Declarations

- FCC
- CE
- RoHS
- REACH
- WEEE



MOREX INFORMATION ENT., CO., LTD.

8 NO. 716, ZHONGZHEN RD., ZHONGHE DIST., NEW TAIPEI CITY 23552, TAWIAN (R.O.C.)

TEL: +886 2 29858063 FAX: +886 2 29845077

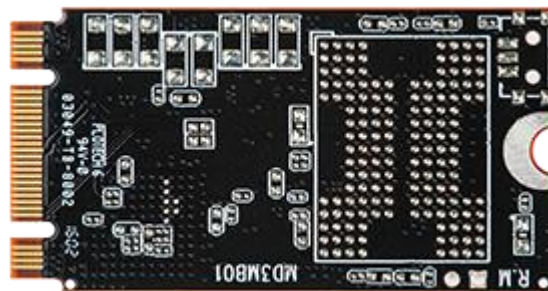
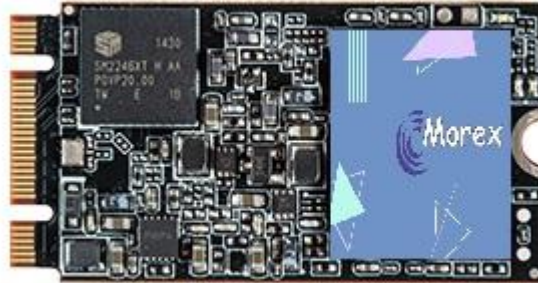
E-MAIL: linda@morex.com.tw WEB: www.morex.com.tw



2.5" SSD M3A & M.2 SATA (2242) M3B



Product Specification
Morex M.2 SATA (2242) M3B



MOREX INFORMATION ENT., CO., LTD.

8 NO. 716, ZHONGZHEN RD., ZHONGHE DIST., NEW TAIPEI CITY 23552, TAWIAN (R.O.C.)

TEL: +886 2 29858063 FAX: +886 2 29845077

E-MAIL: linda@morex.com.tw WEB: www.morex.com.tw



2.5" SSD M3A & M.2 SATA (2242) M3B



Form Factor

- M.2 SATA (2242)

NAND Flash Type

- MLC

Capacities

- 16GB, 32GB, 64GB, 128GB, 256GB

Performance

- Sequential Read (max): 520 MB/sec
- Sequential write (max): 197 MB/sec
- Random Read (max): 33700 IOPS
- Random write (max): 46700 IOPS

Supply Voltage

- 3.3V±5%

Power Consumption

- Idle mode: 0.264W (3.3Vx80mA)
- Active mode(max): 0.825W (3.3Vx250mA)

Temperature Ranges

- Operating:
- Standard: 0°C~+70°C
 - Extended: -25°C~+85°C
 - Industrial: -40°C~+85°C
- Storage:
- 55°C to 95°C

MTBF

- > 3,000,000 hours

Hardware Function Switch (Optional)

- Write Protect
- Quick Erase

Compliance With

- Serial ATA Revision 3.1 specifications
- SATA3 (6Gb/s) interface
- Backward compatible with SATA1 (1.5Gb/s) and SATA2 (3Gb/s) interface
- ATA/ATAPI-8 and ACS-2 command set
- Data set management command (TRIM)
- SATA Device Sleep (DEVSLP)
- Self-Monitoring, Analysis, and Reporting Technology (S.M.A.R.T)

Data Protection and Reliability

- Built-in hardware ECC, enabling up to 66-bit correction per 1KB
- Supports ATA8 security feature set
- Internal data shaping technique increases data endurance
- Global wear leveling algorithm

Certificates and Declarations

- FCC
- CE
- RoHS
- REACH
- WEEE



MOREX INFORMATION ENT., CO., LTD.

8 NO. 716, ZHONGZHEN RD., ZHONGHE DIST., NEW TAIPEI CITY 23552, TAWIAN (R.O.C.)

TEL: +886 2 29858063 FAX: +886 2 29845077

E-MAIL: linda@morex.com.tw WEB: www.morex.com.tw